

SAMPLE

Official Ballot
City of Mary Esther
Municipal Election
Okaloosa County, Florida
March 08, 2022

SAMPLE

- **Instructions:** To vote, fill in the oval completely (●) next to your choice. Use only the marking pen provided or a blue or black pen.
- If you make a mistake, ask for a new ballot. Do not cross out, or your vote may not count.

**Mayor
(Vote for One)**

- Chris George Stein
- Ned Stieglitz

**City Council
(Vote for up to Three)**

- Rob "Benny" Bennington
- Larry John Carter
- George Crews
- Bernie Oder
- April Sutton
- Douglas White

MUESTRA

Boleta Oficial
Ciudad de Mary Esther
Elección Municipal
Condado de Okaloosa, Florida
8 de marzo de 2022

MUESTRA

- **Instrucciones:** Para votar, rellene completamente el óvalo (●) próximo a su selección. Use solo el rotulador provisto o un rotulador azul o negro.
- Si comete un error, solicite una nueva boleta. No borre o realice otras marcas, o su voto puede no ser computado.

**Mayor
(Vote for One)**

- Chris George Stein
- Ned Stieglitz

**City Council
(Vote for up to Three)**

- Rob "Benny" Bennington
- Larry John Carter
- George Crews
- Bernie Oder
- April Sutton
- Douglas White

This is your Sample Ballot for the March 08, 2022, City of Mary Esther Municipal Election.

- Only City of Mary Esther residents registered to vote on or before February 7, 2022, are eligible to vote in this election.
- If you have moved since you last voted, please check with the Supervisor of Elections Office to verify if you are still eligible for this city election.
- **Move your polling place to your living room.** Request your ballot by contacting the Supervisor of Elections office via telephone, email, mail, in person or by visiting our website. Vote-by-mail ballots must be returned to the Supervisor of Elections Office by 7pm on Election Day in order to be counted.
- **Early voting** will be held Monday, February 28 – Friday, March 04, 2022, at the Supervisor of Elections Office in Shalimar. Hours of operation are 8:30 am – 4:30 pm.
- Your polling place (see next page) for registered city residents will be open from 7am to 7pm on March 08, 2022, Election Day.

Esta es su boleta de muestra para las elecciones municipales de la ciudad de Mary Esther del 8 de marzo de 2022.

- Solo los residentes de la Ciudad de Mary Esther registrados para votar el 7 de febrero de 2022 o antes, son elegibles para votar en esta elección.
- Si se ha mudado desde la última vez que votó, consulte con la Oficina del Supervisor de Elecciones para verificar si aún es elegible para esta elección de la ciudad.
- Mueva su lugar de votación a su sala de estar. Solicite su boleta comunicándose con la oficina del Supervisor de Elecciones por teléfono, correo electrónico, correo postal, en persona o visitando nuestro sitio web. Las boletas de voto por correo deben devolverse a la Oficina del Supervisor de Elecciones antes de las 7:00 p. m. del día de las elecciones para que se cuenten.
- La votación anticipada se llevará a cabo del lunes 28 de febrero al viernes 4 de marzo de 2022 en la Oficina del Supervisor de Elecciones en Shalimar. El horario de atención es de 8:30 a. m. a 4:30 p. m.
- Sus lugares de votación (ver al reverso) para los residentes registrados de la ciudad estarán abiertos de 7 am a 7 pm el 8 de marzo de 2022, día de las elecciones.



Paul Lux, Okaloosa County Supervisor of Elections

Sample Ballot Enclosed
Incluidos en la boleta de muestra

City of Mary Esther Municipal Election
Elección municipal del la ciudad de Mary Esther

City of Mary Esther Polling Place Open on Tuesday, March 8, 2022, from 7am to 7pm:
Los lugares de votación de la Ciudad de Mary Esther abren el martes 08 de marzo de 2022, de 7 am a 7 pm:

- **Pct. 21:** First Baptist Church, 28 North St, Mary Esther.

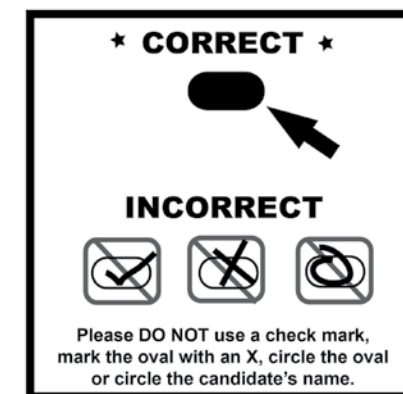
Your Vote Counts!
¡Su voto cuenta!

South Office
Oficina al sur
1250 Eglin Pkwy, Ste 103
Shalimar, FL 32579
Phone: 850.651.7272

www.VoteOkaloosa.gov
For more information, email:
Para obtener más información, envíe un correo electrónico a:
plux@myokaloosa.com

Election Headquarters
Sede de Elecciones
302 N Wilson St., Ste 102
Crestview, FL 32536
Phone: 850.689.5600
Fax: 850.689.5644

HOW TO MARK A PAPER BALLOT (OPTICAL SCAN)



Please follow instructions located at the top of your ballot to avoid any issues that may occur with an incorrectly marked ballot. Fill in the oval as best as you can while avoiding stray markings outside of the oval or within the margins of the ballot. Above is an example of a correct marking of the oval, completely filled in with a blue or black ink pen. If you make a mistake, ask our Patriot Poll Workers for assistance.



NEED ASSISTANCE AT THE POLLS?

Need assistance to vote? You can bring a friend or family member, but our Patriot Poll Workers are well trained and qualified to assist you. All polling places are accessible to voters with special needs. AutoMARK ballot marking devices are available for voters with disabilities to vote secretly and independently.

ADDRESS CHANGE

If you have moved recently and have a new address other than the one in the poll register, you will be asked to see the Clerk to determine if you are in the correct precinct. It is a third-degree felony to vote in a precinct other than which you live. If you would like to verify your address with our office before Election Day, just call or email us, or use our online Voter Lookup Tool.

IDENTIFICATION

Voter Information cards are not a valid form of identification when voting. Be sure to bring a current and valid photo ID for precinct and early voting. If the photo ID does not contain your signature, an additional ID that includes your signature shall be required. If you do not bring any ID, you will be allowed to vote; however, you will be asked to vote a provisional ballot. Approved forms of photo ID are:

- Florida Driver's License
- Florida ID Card issued by the Department of Highway Safety & Motor Vehicles
- Military ID
- Current U.S. Passport
- Debit/Credit Cards
- Student ID
- Retirement Center ID
- Neighborhood Association ID
- Public Assistance ID
- FL Concealed Carry License
- Veteran Health ID Card
- Federal, State, County, or Local Government Employee ID Card

INTERESTED IN BECOMING A POLL WORKER?

- Applications are available at the Supervisor of Elections Office or online at **www.VoteOkaloosa.gov**.
- Selection is based on qualifications to fulfill job description.
- Appointed after mandatory training classes, no less than six hours per election year.
- Paid positions, with requirements



¿Necesitas ayuda en español?

Si necesita ayuda en español, habrán recursos disponibles en su centro de votación y en nuestro sitio web: **VoteOkaloosa.gov**. Ahí encontraras información sobre el proceso electoral en el condado Okaloosa, instrucciones como Votar por Correo, el boleta traducido al español, y como registrarse para votar o actualizar su información.